

**COURTYARD<sup>®</sup>**  
**Marriott<sup>®</sup>**

---

**BERLIN CITY CENTER**

**Conferences & Events**



## Conferences & Events

Discover the "new center of Berlin" - located in the heart of Germany's capital between "Potsdamer Platz" and "Alexanderplatz". The Courtyard by Marriott Berlin City Center offers excellent services to its international clientele since the opening in June 2005.

Just a short walk away, you find a few of Berlin's main attractions, such as the famous "Friedrichstrasse" with the legendary Checkpoint Charlie, the "Gendarmenmarkt" and the "Nikolaiviertel".

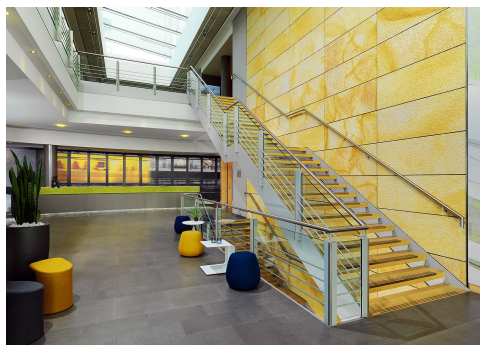
Experience Berlin's fascinating and exciting atmosphere and discover an extraordinary hotel concept full with comfort, elegance and a colorful design.

### Hotel information

Hotel opening: June 2005  
Floors: 6  
Non smoking rooms: 1<sup>st</sup> - 6<sup>th</sup> floor/ 267 rooms  
(renovated in 2014)  
Conference rooms: 11  
(renovated in 2016)

### Room categories

Total number: 267  
Deluxe: 118 Twin + 118 King / 26 sqm  
Superior: 21 rooms / 33 sqm  
Junior Suite: 6 rooms / 44 sqm  
Suite: 4 rooms / 53 sqm  
Handicap-accessible: 19 rooms  
Wheelchair-accessible: 5 rooms  
Check in: 03:00 p.m.  
Check out: 12:00 p.m.





# COURTYARD<sup>®</sup>

## Marriott<sup>®</sup>

### Room facilities

King bed: 1.80 m x 2 m

Twin bed: 1.20 m x 2 m

All rooms are equipped with an air-conditioning, Pay-TV, ironing station, two telephones, hair dryer, mini-fridge, coffee and tea making facilities, high-speed internet access and safe in laptop size.

### Children

Baby beds are free of charge and are made according to Marriott standards.

### Internet

Wireless internet is available throughout the hotel and free of charge.

### Service

- ✕ Business Center (computer terminals in the lobby)
- ✕ 24 hour shop "The Market"
- ✕ Laundry service
- ✕ Fitness area (24 hours a day)
- ✕ Sauna (05:00 p.m. - 11:00 p.m.; earlier upon request)

### Parking spaces

- ✕ Total parking spaces : 130
- ✕ Cost per hour : € 2.00
- ✕ Cost per day : € 20.00
- ✕ Height of garage : 2.10 m





# COURTYARD<sup>®</sup> Marriott<sup>®</sup>

## General information

### The Market

Our 24 hour Shop offers souvenirs, selected articles for daily needs, drinks, and home-made food at moderate prices.

### Bar and Restaurant

Our "Oléo Pazzo" bar and restaurant (180 seats) offers a delightful international cuisine and home-made lemonades.

### #HASHTAG

Our coffeeshop #HASHTAG is the new hotspot in Berlin's city center for hot coffee & cool drinks. Discover specialties from Berlin in a modern way like baked potato with a variety of toppings or any other menu item of our daily changing menu. It is also possible to book #HASHTAG for your event.

### Opening hour "Oléo Pazzo"

Breakfast Mon.– Sat.:	06:30 a.m. – 10:30 a.m.
Breakfast Sun.:	06:30 a.m. – 11:00 a.m.
Lunch:	11:30 a.m. – 05:00 p.m.
Dinner:	05:00 p.m. – 11:00 p.m.

### Breakfast prices

Children until 6 years:	free of charge
Children from 7 till 12 years:	50%
From 13 years:	100%

### Breakfast buffets

Continental buffet:	€ 10.00
Good start buffet:	€ 14.50
Full breakfast buffet:	€ 18.50

Accepted credit cards: VISA, American Express, MasterCard, Diners Club, JCB







## Conference rooms

Eleven meeting rooms as well as two spacious foyers, which are ideal for exhibitions and receptions, provide a modern environment for successful events.

All meeting rooms have daylight, wireless internet, air-conditioning, integrated sound systems and it is possible to darken the rooms. Our function rooms allow you to work in a pleasant atmosphere and our friendly and competent service team is happy to assist you with any requests.

### Meeting rooms

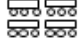


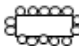


Number of meeting rooms:	11
Foyer Berlin and the first floor Foyer:	277 sqm
Total meeting space with foyer:	1052 sqm
Total meeting space without foyer:	775 sqm

The main meeting room is Berlin with 267 sqm and a total capacity of 280 persons in theater style.





# COURTYARD<sup>®</sup> Marriott.

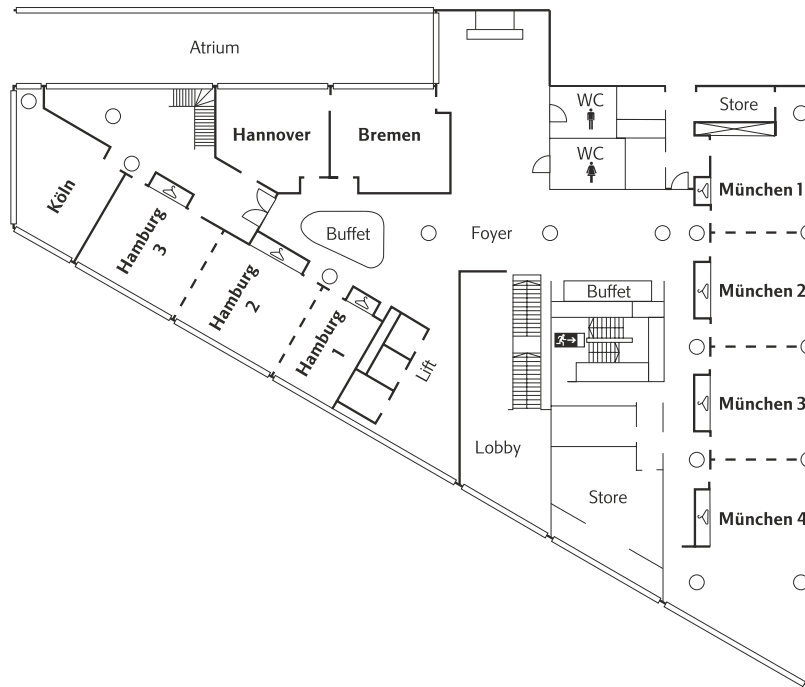
Room	Size in sqm	Measures L X W X H	 Classroom	 Theatre	 Bankett	 Boardroom	 U-Shape	 Crescent rounds
München 1	45	6x6x3	15	28	16	14	---	12
München 2	48	7x6x3	25	40	30	16	18	18
München 3	48	7x6x3	25	40	30	16	18	18
München 4	95	12x8x3	40	70	48	26	36	30
München 1-2	93	13x6x3	40	70	48	26	30	30
München 1-3	141	20x6x3	68	110	80	50	54	54
München 1-4	236	32x6x3	110	180	120	---	---	90
München 2-3	96	14x6x3	50	80	64	32	36	36
München 2-4	191	26x4x3	98	150	104	---	---	78
München 3-4	143	19x6x3	68	110	72	44	48	54
Hamburg 1	29	4x7x3	---	18	8	12	---	---
Hamburg 2	48	7x7x3	25	40	30	16	18	18
Hamburg 3	48	7x7x3	25	40	30	16	18	18
Hamburg 1-2	79	11x7x3	40	60	48	26	30	30
Hamburg 1-3	125	18x7x3	68	110	80	50	54	54
Hamburg 2-3	96	14x7x3	50	80	64	32	36	36
Bremen	50	8x6x3	21	40	24	16	18	18
Hannover	45	8x5x3	21	35	24	16	18	18
Köln	48	2x6x3	---	---	---	12	---	---
Berlin	267	22x12x3,7	150	280	150	---	45	90



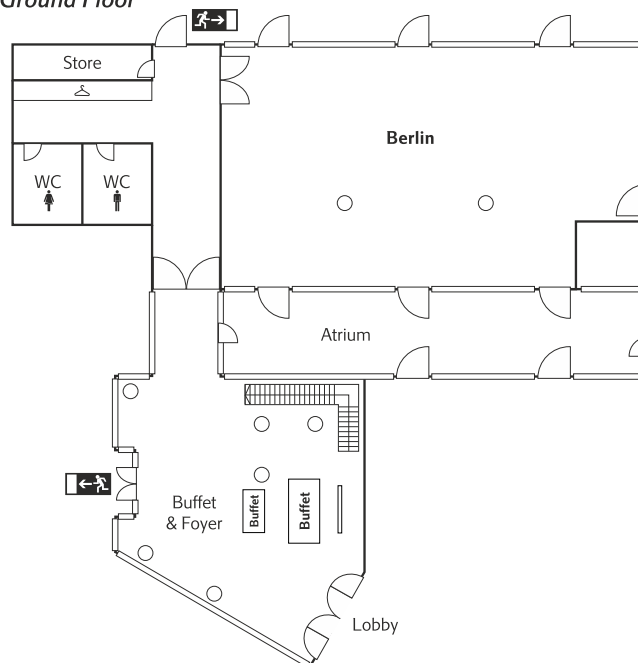


# COURTYARD<sup>®</sup> Marriott<sup>®</sup>

Obergeschoss *First Floor*



Erdgeschoss *Ground Floor*







# COURTYARD<sup>®</sup> Marriott<sup>®</sup>

## Meeting package

### Simply good

- ✦ A selection of various tea and coffee specialties, natural flavored water and usage of the candy station in the foyer (available one hour prior to the meeting until the end of the meeting)
- ✦ Conference room according to the number of Participants.
- ✦ Technical equipment: projector, screen and flipchart
- ✦ W-LAN for all participants
- ✦ Two coffee breaks in the morning and afternoon including tea, coffee, a rich selection of snacks, fruits and pastries
- ✦ Lunch buffet or 3 course menu at Chef's choice
- ✦ Unlimited mineral water and apple juice in the conference room and with the lunch



**Full day: € 72.00 pro Person**

**Half day: € 64.00 pro Person**

- 
- ✦ Please ask us about the special conditions for week-ends and the low season.







# COURTYARD<sup>®</sup> Marriott<sup>®</sup>

## Sights in the neighborhood

**Alexanderplatz** is the most famous square in Berlin. Here you will find the renowned clock, which displays the current time in different countries around the world and the "Fountain of Peoples' Friendship", which was built in 1969. You can reach Alexanderplatz by underground (U2) starting at the station Spittelmarkt, which is located close to the hotel.

**Checkpoint Charlie** on legendary Friedrichstrasse, a 10 minutes walk from the hotel. Opposite of checkpoint Charlie is the "Wall Museum" which is open from 9:00 a.m. till 10:00 p.m. on a daily basis.

**Gendarmenmarkt** is one of Europe's most beautiful squares. Here is the German Dome, the French Dome and the Concert Hall from an architecturally harmonic and stunning ensemble. The Gendarmenmarkt is located only a 10 minute walk from the hotel.

**Potsdamer Platz** is the center of the contemporary Berlin with a wide range of restaurants, shops, theatres and cinemas. The famous square does not only attract tourists but also many locals. Potsdamer Platz is easily accessible with the underground (U2) within a few minutes. Furthermore includes the Potsdamer Platz magnificent architecture.

**Nikolaiviertel** is one of Berlin's most famous attractions. It includes a variety of bars and restaurants which are located in medieval, cobble-stone alleys. On the district are the Nikolai church, Ephraim Palace and the "Knoblauchhaus" ranks among the city's most well-known sights. Nikolaiviertel is within walking distance from the hotel.

**Friedrichstraße** is one of Berlin's popular shopping areas with the famous Gallery Lafayette. The Friedrichstraße is a five minute walk from the hotel.

